

Professional Development Planning Guide

Professional development is the backbone of strong implementation, and Amplify welcomes the opportunity to partner with you to design a professional development plan that meets your needs. This planning guide will support you in selecting:

- just-right sessions for your teachers and leaders
- appropriate delivery methods and durations

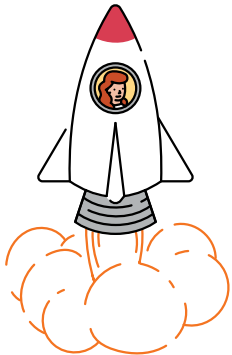


Supporting success

Professional development will set your teachers and leaders up for success. Our interactive sessions will help you **launch, strengthen, and coach** teachers and leaders to implement the program with ease and provide students with an impactful experience.

LAUNCH

Beginning of the year

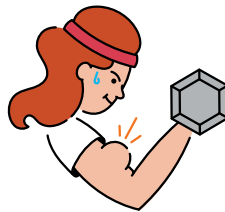


Propel into the new school year with sessions that introduce you to your Amplify program and support you in a strong implementation.

Before teaching

STRENGTHEN

Mid-year, end of the year



Boost implementation with sessions that target specific instructional practices.

After 6+ weeks of teaching

COACH

Mid-year, end of the year



Guide teachers and leaders with targeted learning tailored to their specific needs.

Flexible delivery options

Amplify is prepared with session options that fit your time, budget, and preferences.



Onsite support

In person, up to 30 participants



Remote support

Live webinar, up to 30 participants



Online course

Self-paced



Recommended sessions for teachers and leaders

Below you will find a recommended professional development plan for Amplify Math. Learn more about the goals for each session by visiting [Amplify Math professional development](#).

Key



Recommended sessions



Recommended sessions for teachers



Recommended sessions for leaders

LAUNCH

★ Initial training for teachers*

Full day

2 half days

Half day

* Choose applicable grade levels or choose grade bands.

★ Initial training for leaders

Half day

Half day

STRENGTHEN

★ Unit guided planning

Full day

2-hour session

★ Strengthening session*

2 half days

Half day

* Choose topics based on school needs. [See the full list](#) of other topic-based strengthen offerings in our professional development catalog.

COACH

★ Coaching session

Full day

1 hour

Next steps

Ready to lock-in your dates? Want to learn more about developing a professional development plan to meet your needs? Contact your account executive to put this plan into action.

To learn more about Amplify's professional development services, visit [Amplify professional development](#).

Amplify.